

# Tulsa Beautification Foundation Matching Grant Program Project Application

Please print or type. Answer each question briefly. You may use one additional 8 1/2" by 11" sheet to complete your answers (in addition to required map attachment). Be sure to number questions answered on additional sheets. If the question does not apply to your project, put N/A (not applicable).

## Part I

### *General Information*

Name of organization: Hoover Neighborhood Association

Describe the general location and physical address (if applicable) of your project and attach an 8 1/2" by 11" boundary map:

Darlington Park  
South Darlington Avenue and E 29th Street South

---

Please refer attached site map for project boundaries and schematic drawing of improvements

Application contact person: Greg Gatewood

Address: 4936 E 27th Street

74114

Email: greggatewood@gmail.com

Phone (day): 918.671.9901 (evening): 918.671.9901

Title of project: Hoover Neighborhood Darlington Park Improvement Project

### *Qualifying Information for Organization*

1. Please list the organization's current officers, names, and titles.

The Hoover Neighborhood Association current officers, including names and titles are:

Nancy Carlson, President  
Dan Darby, Vice-President  
Larry Wolverton - Treasurer  
Kim Zehender - Secretary

2. List any of the organization's committees and/or chairpersons for this project.

Darlington Park Beautification Committee

Greg Gatewood, Chairperson  
Cindy Longacre  
Joyce Boltz  
Martha Mattes  
Nancy Carlson

## Part II

### Qualifying Information for Projects

1. Briefly describe the project and attach any applicable plans or schematic designs.

The Hoover Neighborhood Association, in partnership with the Tulsa Beautification Foundation, the George Kaiser Family Foundation, community businesses, and individual partners, plans to improve and beautify Darlington Park, 29th and Darlington, through the Tulsa Beautification Foundation Matching Grant Program. Darlington Park is an anchoring community gathering spot for families and individuals not only residing in the Hoover Neighborhood boundaries, but many nearby neighborhoods of Tulsa. As part of a developing multi-year master plan for the Hoover Neighborhood, the improvements to Darlington Park for this project include new rust and graffiti resistant and ADA-accessible picnic tables under the shelter, new park benches with backs near the recently improved playground, the installation of a new concrete water fountain to replace a long-removed water fountain, a new serpentine bike rack, the reuse of and relocation of two existing aluminum picnic tables to shady areas under the trees, and the addition of round, fiberglass planters that will be filled with drought tolerant plants. The project will be completed by neighborhood residents and community members through the use of volunteer labor, time & talents to help improve and beautify the City of Tulsa.

2. Briefly describe the benefits of the project to the community.

As an anchoring community gathering spot, Darlington Park is used by a wide diversity of Tulsa residents and visitors for numerous purposes. Family outings, birthday parties, school, faith, and community social events, recreational sports play such as tennis or basketball, or residents simply enjoying a walk in the grass are common at Darlington Park. The Hoover Neighborhood Darlington Park Improvement Project will enhance visitors' overall experience at the park. Parents and Grandparents will be able to comfortably watch their children play. Children and other bicyclists will be offered a place to safely secure their bicycle while playing basketball or tennis at the park. People of all capabilities will be able to better use the shelter with new and ADA-accessible picnic tables. A family can enjoy a picnic under a large, mature shade tree. These improvements provide neighbors and the community as a whole, opportunities to better enjoy a day at the park while growing and strengthening positive social interactions.

3. Have you researched the required permits and permissions needed to complete the project?  
 Yes       No       Not Applicable

If 'yes,' please explain what permits and permissions you think you will need.

If 'no' or 'n/a,' please explain.

The projects primary improvements to Darlington Park consist of the removal of old picnic tables & older park benches, the reuse and relocation of two existing picnic tables, and the addition of surface mounted park amenities including picnic tables, park benches with backs, and bike racks, with work scheduled to be completed by community volunteers. In the event of any permits/permissions beyond the normal requirements of the City of Tulsa and this project require, the Hoover NA will be happy to comply.

4. Does your project require upkeep/maintenance beyond the grant period?  
 Yes       No

If 'yes,' please attach a detailed maintenance plan (i.e. funding, volunteers, etc.).

If 'no,' please explain why not.

The project takes into consideration sustainable issues and the long-term maintenance needs of any improvements through the use and specification of expanded metal, galvanized steel & plastic coated picnic tables, park benches & bike racks, a concrete water fountain, fiberglass planters with drought tolerant plants, and the reuse and relocation of existing picnic tables. The concluding result of these design solutions and material selections require no need for upkeep or maintenance beyond the grant period.

5. ORGANIZATION'S CONTRIBUTION TO PROJECT:

Description of Funds That Have Been Raised / To be Raised:	Amount
Neighborhood Garage Sale Proceeds, "Rent-a-Neighbor" (odd jobs, etc.)	\$ 500.00
Party for the Park! (block party w/prize drawings, picnic opportunities, etc.)	\$ 500.00
10 meals for \$10 (5 meals for 2 at 5 different restaurants, 200 ticket limit)	\$ 2,000.00
<b>FUNDS RAISED TOTAL:</b>	<b>\$ 3,000.00</b>

Donated Materials: (A)	Quantity: (B)	Cost per item: (C)	Total cost: (D)
Drought tolerant plants for planters	1	\$ 250.00	\$ 250.00
			\$ 0.00
			\$ 0.00
			\$ 0.00
			\$ 0.00
			\$ 0.00
			\$ 0.00
<b>DONATED MATERIALS TOTAL:</b>			<b>\$ 250.00</b>

Donated Professional Services: (A)	Quantity: (B)	Cost per hour: (C)	Total cost: (D)
Schematic Site Options (research, drawings)	6	\$ 75.00	\$ 450.00
Material Research & Specification	4	\$ 75.00	\$ 300.00
			\$ 0.00
<b>DONATED PROF. SERVICES TOTAL:</b>			<b>\$ 750.00</b>

Volunteer hours: (A)	Quantity: (B)	Cost @ \$16.19/hour: (C)	Total Cost of Volunteer Hours: (D)
Community Planning & Development	25	\$16.19/hour	\$ 404.75
Project Installation	65	\$16.19/hour	\$ 1,052.35
		\$16.19/hour	\$ 0.00
<b>VOLUNTEER HOURS TOTAL:</b>			<b>\$ 1,457.10</b>

SUMMARY OF ORGANIZATION'S CONTRIBUTIONS:	
Funds that have been raised, or will be raised:	\$ 3,000.00
Donated materials:	\$ 250.00
Donated professional services:	\$ 750.00
*Volunteer hours (not to exceed 35% of total organization contribution):	\$ 1,457.10
<b>TOTAL ORGANIZATION CONTRIBUTION:</b>	<b>\$ 5,457.10</b>

\* Please manually fill

6. TOTAL PROJECT COST:

- A. Description: list each resource needed to complete the project
- B. Quantity: list the amount/quantity of each resource needed
- C. Cost per item: list how much each item costs
- D. Total item cost: calculate total cost (B x C)

Resource item description: (A)	Quantity: (B)	Cost per item: (C)	Total item cost: (D)
Donated Materials Total (auto filled from Question 6 totals):	-----	-----	\$ 250.00
Donated Professional Services Total (auto filled from Question 6 totals):	-----	-----	\$ 750.00
Donated Volunteer Hours Total (auto filled from Question 6 totals):	-----	-----	\$ 1,457.10
ADA compliant 8' long picnic table	1	\$ 587.00	\$ 587.00
8' long picnic table	1	\$ 543.00	\$ 543.00
6' long picnic table	2	\$ 513.00 + 217 shipping	\$ 1,026.00
Concrete Water Fountain	1	\$ 708.00	\$ 708.00
Park Benches (with backs)	4	\$ 295.00	\$ 1,180.00
Bike Rack	1	\$ 548.00 + 2001	\$ 548.00
Planters (fiberglass, round)	3	\$ 375.00	\$ 1,125.00
Toddler Swings	1	\$ 750.00	\$ 750.00
Applicable Taxes	1	\$ 531.00	\$ 531.00
Shipping	1	\$ 700.00	\$ 700.00
			\$ 0.00
			\$ 0.00
			\$ 0.00
			\$ 0.00
			\$ 0.00
			\$ 0.00
			\$ 0.00
			\$ 0.00
			\$ 0.00
			\$ 0.00
			\$ 0.00
			\$ 0.00
			\$ 0.00
<b>PROJECT TOTAL:</b>			<b>\$ 10,155.10</b>



7. TBF GRANT AMOUNT REQUESTED (neither to exceed total organization contribution nor 50% of total project cost): \$ 5,077.55

8. GRAND TOTALS

Total Organization Contribution (question 6): \$ 5,457.10

TBF Grant Amount Requested (question 7): \$ 5,077.55

Total Project Cost (question 5): \$ 10,155.10

---

**PART III**

***Certification by Organization***

By signing this application, I certify that the information contained in this application is true and correct to the best of my knowledge. I also agree to comply with the requirements of the Tulsa Beautification Foundation Matching Grant Program, and I certify that the completed project will not materially deviate from the plan submitted in this application.

**President/ Board Chair**

Name: Nancy Carlson

Signature: *Nancy Carlson*

Date: 6-30-13

**Project Manager**

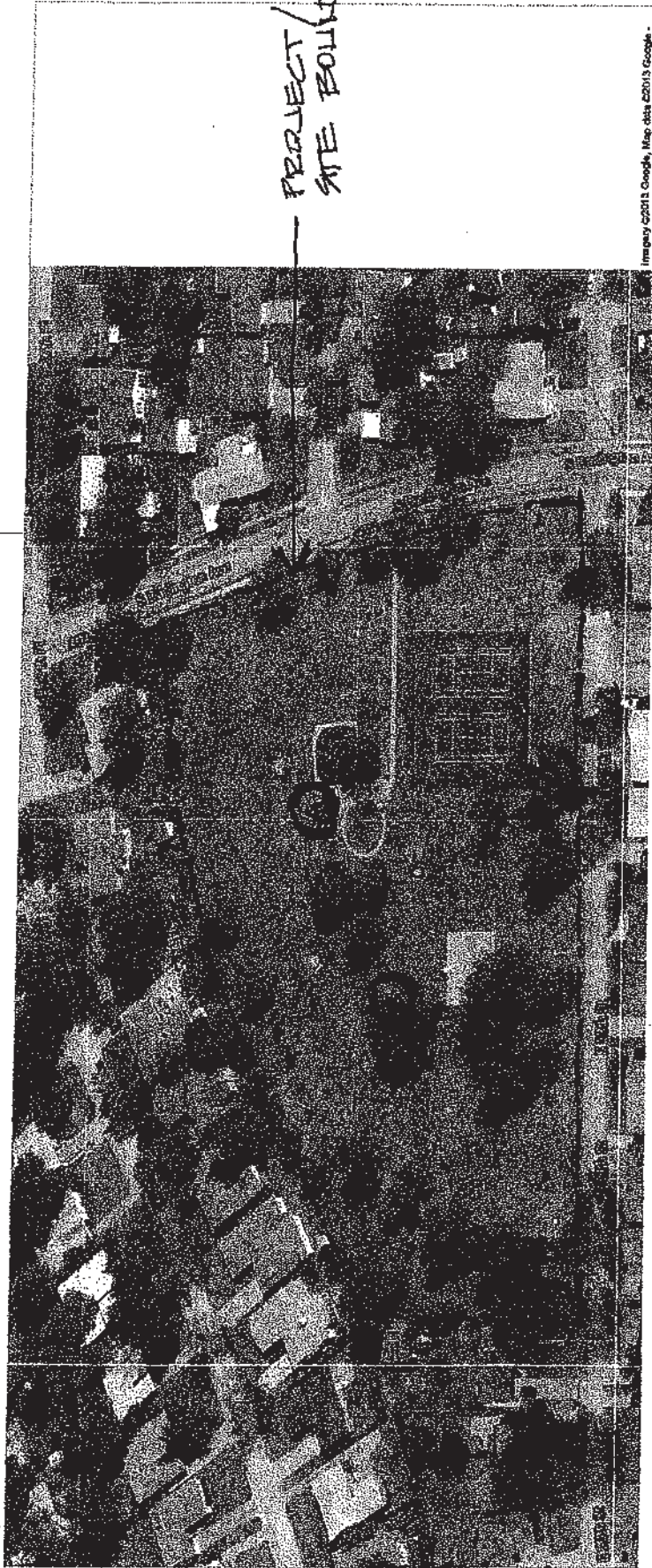
Name: Greg Gatewood

Signature: *Greg Gatewood*

Date: 6/30/13

Google

To see all the details that are visible on the screen, use this "Print" link next to the map.



- A = INSTALLATION LOCATION AREA FOR NEW PICNIC TABLES, NEW PARK BENCHES, NEW PLANTERS / PLANTS, NEW TRIVE RACK & NEW REPLACEMENT WATER FOUNTAIN
- B = RELOCATED EXISTING PICNIC TABLES, APPROXIMATE LOCATION AREA

# BOUNDARY / SCHEMATIC

HOOPER NEIGHBORHOOD  
 DARLINGTON PARK  
 A

Customize your item  
(click tab to close)

Search by product number or keyword:



877.777.3700 | 8:00am - 8:00pm EDT

Shopping Cart:  
Your cart is empty.

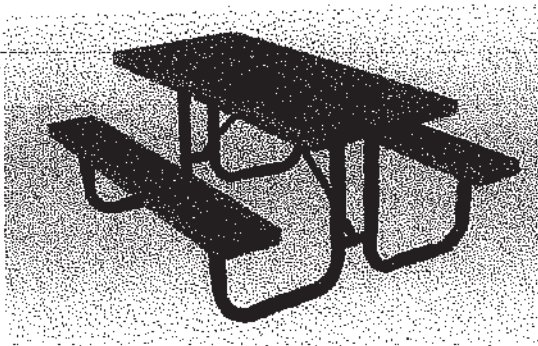
### Categories

[< Back to Previous](#) | [Back to Plastic and Plastic Coated](#)

- Home
- Combo Menu
- Quick Ship Items
- Benches
- Bike Racks
- Bleachers
- Drinking Fountains
- Grills and Fire Rings
- Grossfiller
- Fitness Equipment
- Mailboxes
- Message Centers
- Park Benches
- Parts and Accessories
- Pedal Boats
- Pet Waste Solutions
- Picnic Tables
- Planters
- Playgrounds
- Pool Furniture
- Restaurant Furniture
- Security Barriers
- Sports Equipment
- Trash Receptacles and Recycling
- Tropitone

### Picnic Table - Rivendale Economy Style Plastic Coated Tops with Powder Coated Legs Portable Mount

6 Ft Long, Rectangular - 2 Seats  
Expanded Metal - 11TA-131PM - [See Related Products](#)



Color Now!

Quantity: 1  
 1 per pack  
 Ship Weight: 212lbs.  
 Your Price:  
**\$512.95**

Add to cart

[Additional Sizes/Styles/Variations!](#)

[Options](#) | [Features](#) | [More Info](#) | [Photos](#) | [Warranty](#)

### CHOOSE COLORS AND OPTIONS ABOVE



Samples are available upon request.  
Call ParknPool at 877-777-3700 Email: [info@parknpool.com](mailto:info@parknpool.com) for samples.

[top](#)

### Related Products

11BE-001PM



Rivendale Style Expanded

11RE-00003



Classic Trash Receptacle

75DF-006DB



Pedestal Drinking Fountain

12GR-00001



Santa P

Customize your item  
(click tab to close)



Search by product number or keyword

877.777.3700 | 8:00am - 8:00pm EDT

Shopping Cart:  
Your cart is empty.

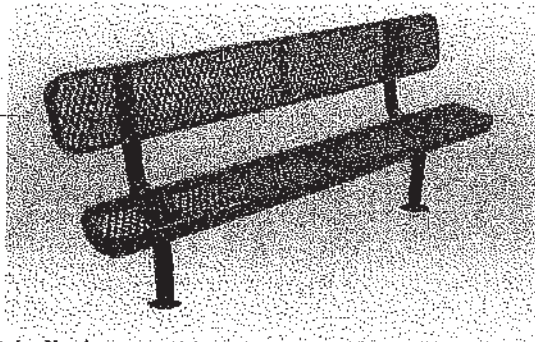
### Categories

- Home
- Combo Menu
- Quick Ship Items
- Benches
- Bike Racks
- Bleachers
- Drinking Fountains
- Grills and Fire Rings
- Grosfillex
- Fitness Equipment
- Mailboxes
- Message Centers
- Park Benches
- Parts and Accessories
- Pedal Boats
- Pet Waste Solutions
- Picnic Tables
- Planters
- Playgrounds
- Pool Furniture
- Restaurant Furniture
- Security Barriers
- Sports Equipment
- Trash Receptacles and Recycling
- Tropitone

[< Back to Previous](#) | [Back to Plastic and Plastics Coated Benches](#)

## Rivendale Style Expanded Metal Bench with Back

6 Feet Long, Surface Mount, - 11BE-001SM - [See Related Products](#)



Color Now

Quantity: 1  
 1 per pack  
 Ship Weight: 113lbs.  
 Your Price:  
**\$294.95**

Add to cart

[Additional Sizes/Styles/Variations:](#)  
8 Feet Long

[Options](#) | [Features](#) | [More Info](#) | [Photos](#) | [Warranty](#)

### CHOOSE COLORS AND OPTIONS ABOVE



Samples are available upon request.  
Call Park n Pool at 877-777-3700 Email: [info@parknpool.com](mailto:info@parknpool.com) for samples.

[#top](#)

### Related Products

11RE-00023



Rivendale Trash Receptacle  
Textured Polyethylene  
Coated  
Lid and Liner NOT included  
-- 32 Gallon

11TA-136PM



Picnic Table - Rivendale  
Economy Style  
Plastic Coated Tops with  
Powder Coated Legs  
Portable Round

11AC-00001



Surface Mount Cover for  
Round Tabling ...  
- for 2 3/8" Tabling (Set of 2),

17PW-00006



DOGPO  
Stakes  
- include  
Response



Customize your item  
(click tab to close)



Search by product number or keyword



877.777.3700 | 8:00am - 8:00pm EDT

Shopping Cart:  
Your cart is empty.

### Categories

[< Back to Previous](#) | [Back to Bike Racks](#)

[Home](#)

[Combo Menu](#)

[Quick Ship Items](#)

[Benches](#)

[Bike Racks](#)

[Bleachers](#)

[Drinking Fountains](#)

[Grills and Fire Rings](#)

[Grosfillex](#)

[Fitness Equipment](#)

[Mailboxes](#)

[Message Centers](#)

[Park Benches](#)

[Parts and Accessories](#)

[Pedal Boats](#)

[Pet Waste Solutions](#)

[Picnic Tables](#)

[Planters](#)

[Playgrounds](#)

[Pool Furniture](#)

[Restaurant Furniture](#)

[Security Barriers](#)

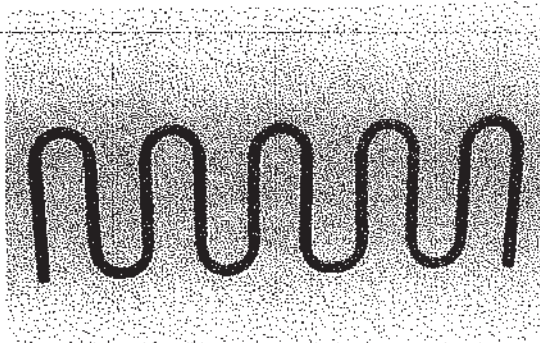
[Sports Equipment](#)

[Trash Receptacles and Recycling](#)

[Tropitone](#)

## Loop Style Bike Rack 2-3/8 in. OD Schedule 40 Steel Pipe 100% Plastisol Coated

Inground Mount, 5 Loop  
Parks 7 Bikes - 14BR-004IM - [See Related Products](#)



Color Now!

Quantity: 1  
1 per pack  
Ship Weight: 120lbs.  
Your Price:  
**\$530.95**

[Add to cart](#)

**Additional  
Size/Style/Variations:**  
Other Material:  
[Surface Mount](#)

[Options](#) | [Features](#) | [More Info](#) | [Photos](#) | [Warranty](#)

**CHOOSE COLORS AND OPTIONS ABOVE**



Samples are available upon request.  
Call ParknPool at 877-777-3700 Email: [info@parknpool.com](mailto:info@parknpool.com) for samples.

[top](#)

### Related Products

There are no Related Products for this item.



Customize your look  
(click tab to close)



Search by product number or keyword:



877.777.3700 | 8:00am - 8:00pm EDT

Shopping Cart:  
Your cart is empty.

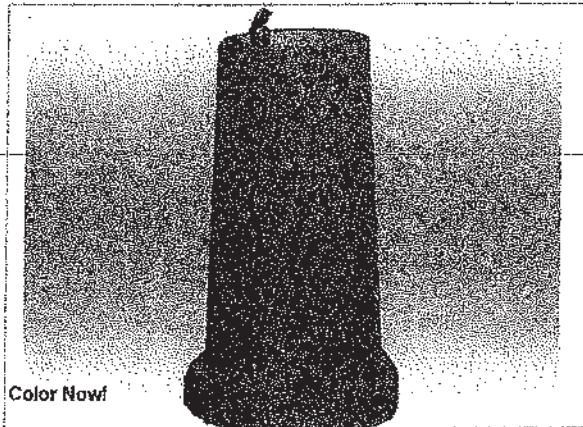
### Categories

[< Back to Previous](#) | [Back to Drinking Fountains](#)

- Home
- Combo Menu
- Quick Ship Items
- Benches
- Bike Racks
- Bleachers
- Drinking Fountains
- Grills and Fire Rings
- Grosfillex
- Fitness Equipment
- Mailboxes
- Message Centers
- Park Benches
- Parts and Accessories
- Pedal Boats
- Pet Waste Solutions
- Picnic Tables
- Planters
- Playgrounds
- Pool Furniture
- Restaurant Furniture
- Security Barriers
- Sports Equipment
- Trash Receptacles and Recycling
- Tropitone

## Vertical Upright Cylindrical Concrete Drinking Fountain

With Concrete Bowl and 1 Front Push Button, - 16DF-00007 - [See Related Products](#)



Color Now!

Quantity:

1 per pack

Ship Weight: 210lbs.

Your Price:

**\$707.95**

Please Call for Shipping on this Item at:  
**877.777.3700**

[Additional Sizes/Styles/Variations:](#)

Options [Features](#) [More Info](#) [Photos](#) [Warranty](#)

### CHOOSE COLORS AND OPTIONS ABOVE



Samples are available upon request.  
Call ParkNPool at 877-777-3700 Email: [info@parknpool.com](mailto:info@parknpool.com) for samples.

[+top](#)

### Related Products

16TA-00009	16RE-00007	16BE-00002	16PL-00055
Concrete Picnic Table Round Top - 30 in. Diameter	Round Concrete Trash Container with Concave Spun Aluminum Pitch in Top	Royal Concrete Bench ...	Aurora Planter

Customize your fit  
(click tab to close)



Search by product number or keyword



877.777.3700 | 8:00am - 8:00pm EDT

Shopping Cart  
Your cart is empty.

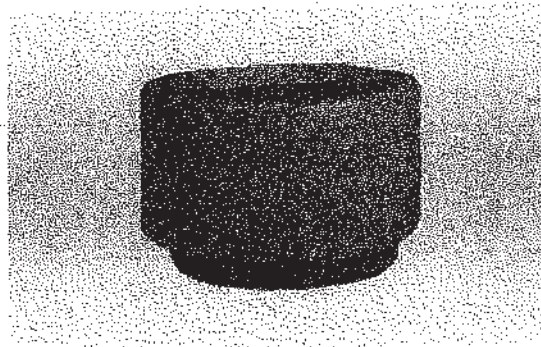
### Categories

[< Back to Previous](#) | [Back to Fiberglass](#)

- Home
- Combo Menu
- Quick Ship Items
- Benches
- Bike Racks
- Bleachers
- Drinking Fountains
- Grills and Fire Rings
- Grosfillex
- Fitness Equipment
- Mailboxes
- Message Centers
- Park Benches
- Parts and Accessories
- Pedal Boats
- Pet Waste Solutions
- Picnic Tables
- Planters
- Playgrounds
- Pool Furniture
- Restaurant Furniture
- Security Barriers
- Sports Equipment
- Trash Receptacles and Recycling
- Tropitone

## 24" Fiberglass Cylinder Planter

24" High, -82PL-00012 - [See Related Products](#)



Color Now!

Quantity: 1

1 per pack

Ship Weight: 25lbs.

Your Price:

**\$374.95**

Add to cart

[Additional Sizes/Styles/Variations!](#)

- Options
- Features
- More Info
- Photos
- Warranty

### CHOOSE COLORS AND OPTIONS ABOVE

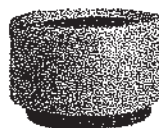


Samples are available upon request.  
Call ParknPool at 877-777-3700 Email: [info@parknpool.com](mailto:info@parknpool.com) for samples.

[top](#)

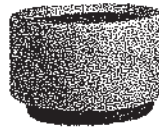
### Related Products

82PL-00009



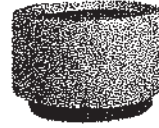
24" Fiberglass Cylinder Planter  
-12" High

82PL-00010



24" Fiberglass Cylinder Planter  
-16" High

82PL-00013



24" Fiberglass Cylinder Planter...  
-27" High

82PL-00014



24" Fiberglass Cylinder Planter...  
-32" High

