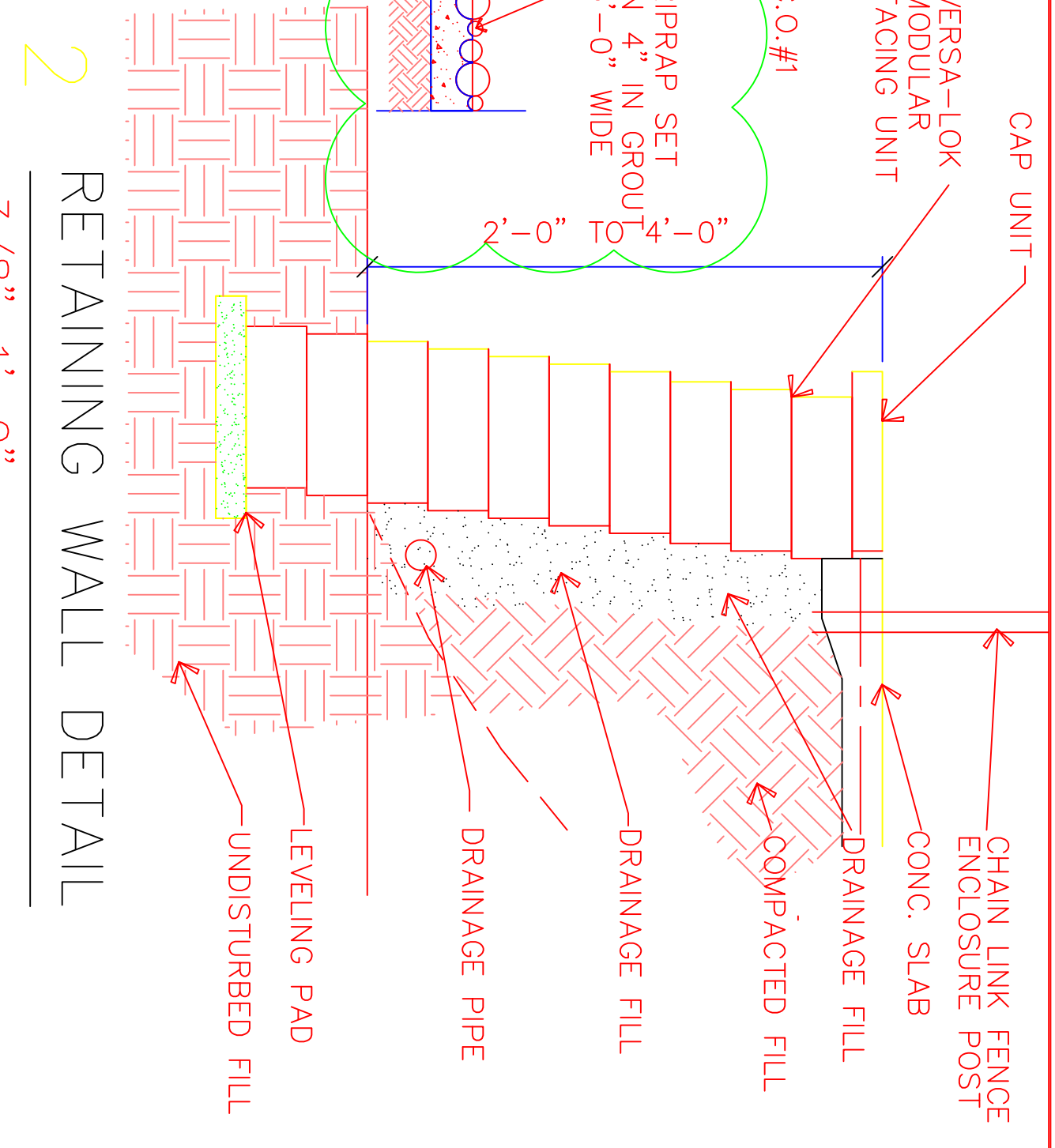


3 HEAD WALL DETAIL
3/8" = 1'-0"



2 RETAINING WALL DETAIL
3/8" = 1'-0"

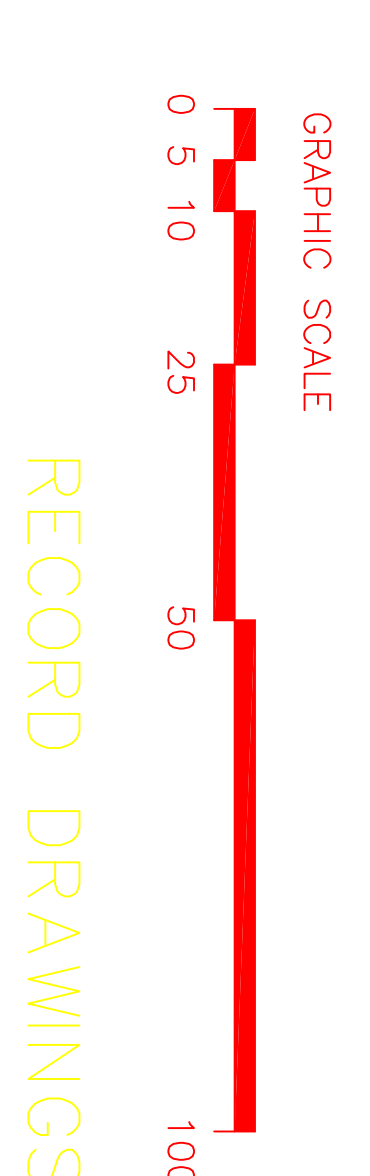
- SYMBOL LEGEND**
- | | |
|--|--------------------------------------|
| | 1. NO SMOKING |
| | 2. HANDICAP ACCESSIBLE |
| | 3. HANDICAP PARKING POLE MOUNTED |
| | 4. VAN HANDICAP PARKING POLE MOUNTED |

SYMBOLS LEGEND

NOTE: ALL SIGNAGE WALL MOUNTED UNLESS NOTED

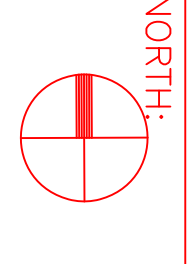
- | | |
|--|-----------------------------------------------------------------------------------------------------------------------------------------------------------------------------|
| | REMOVE TREE |
| | EXISTING TREE TO REMAIN |
| | NEW CONCRETE WALK |
| | SOD TO BE REPLACED |
| | NEW BUILDING CONSTRUCTION |
| | EXISTING BUILDING TO REMAIN |
| | EXISTING CONTOUR TO BE CHANGED |
| | NEW CONTOUR LINE |
| | 8" PVC STORM DRAIN |
| | POWER POLE |
| | 4" PERF. PVC DRAINAGE PIPE |
| | 10" THICK CONT. CONC. FOOTG. & #4 @ 16" O.C. TOP TRANSVERSE UNDISTURBED SOIL |
| | #4 BENT DOWELS @ 16" O.C. |
| | DRAINAGE FILL |
| | #4 @ 16" O.C. VERT. W/ #5 @ 12" O.C. HORIZ. |
| | COMPACTED FILL |
| | CONC. SLAB |
| | CHAIN LINK FENCE ENCLOSURE POST |
| | DRAINAGE SLAB |
| | DRAINAGE FILL |
| | VERSAPRIP SET IN 4" IN GROUND |
| | 8" PVC |
| | CONCRETE |
| | VERSAPRIP MODULAR FACING UNIT |
| | VERSAPRIP RIPPAP EMBEDDED IN 4" GROUT |
| | 5" WIDE RIPPAP EMBEDDED IN 4" GROUT |
| | 3/4" CAMFER |
| | 1/2" EXP. JT. & SEALANT |
| | PROTECT DURING CONSTRUCTION |
| | BASE B'D. EXISTG. 6" C.I. SANITARY SEWER |
| | ALT #2 BID ADD 267 L.F. NEW 6" C.I. SEWER & REPLACE SOD ABANDON APPROX. 220 L.F. 6" C.I. |
| | ALT #1 BID ADD 4" CONC. PAD & 8" CHAIN LINK ENCLOSURE & 5' GATE FOR AIR CONDITIONERS PROVIDE MASONRY OR CONCRETE RETAINING WALL REFER TO DETAIL 2/R1 & REMOVE EXISTING TREE |
| | EXISTING TREE TO REMAIN |
| | EXISTING TREE TO REMAIN |
| | EXISTING TREE TO REMAIN |
| | EXISTING TREE TO REMAIN |

4 CONCRETE RETAINING WALL DETAIL
3/8" = 1'-0"



<p>Tulsa Park and Recreation Department</p> <p>707 South Houston Suite 201 Tulsa, Oklahoma 74127 918/596-7877 fax 918/596-7249</p>	<p>PLANS PREPARED BY:</p> <p>Coleman Ervin Johnston ARCHITECTS - ENGINEERS</p>	<p>SCALE:</p> <p>DRAWN BY: AS SHOWN APPROVED BY: NDB REVISIONS: REO</p>	<p>NORTH:</p>	<p>LOCATION:</p> <p>△ C.O.#1 10/4/95 △ C.O.#2 3/12/97</p> <p>RECORD DRAWINGS 7/9/97</p>	<p>SHEET TITLE:</p> <p>GRADING, PAVING & PLANTING PLAN</p> <p>DATE: 8/17/95</p> <p>SHEET NUMBER: R1R OF 19</p>	<p>PROJECT:</p> <p>REED PARK</p> <p>4233 S. YUKON AVE. TULSA, OKLAHOMA</p>
----------------------------------------------------------------------------------------------------------------------------------------------------	-------------------------------------------------------------------------------------------	---------------------------------------------------------------------------------	---------------	---------------------------------------------------------------------------------------------	---------------------------------------------------------------------------------------------------------------------------	---------------------------------------------------------------------------------------

SEAL:



SCALE:
DRAWN BY: GRAPHIC
APPROVED BY: NDB
REVISIONS: BY: REO

RECORD DRAWINGS 7/10/97

LOCATION:

PROJECT:

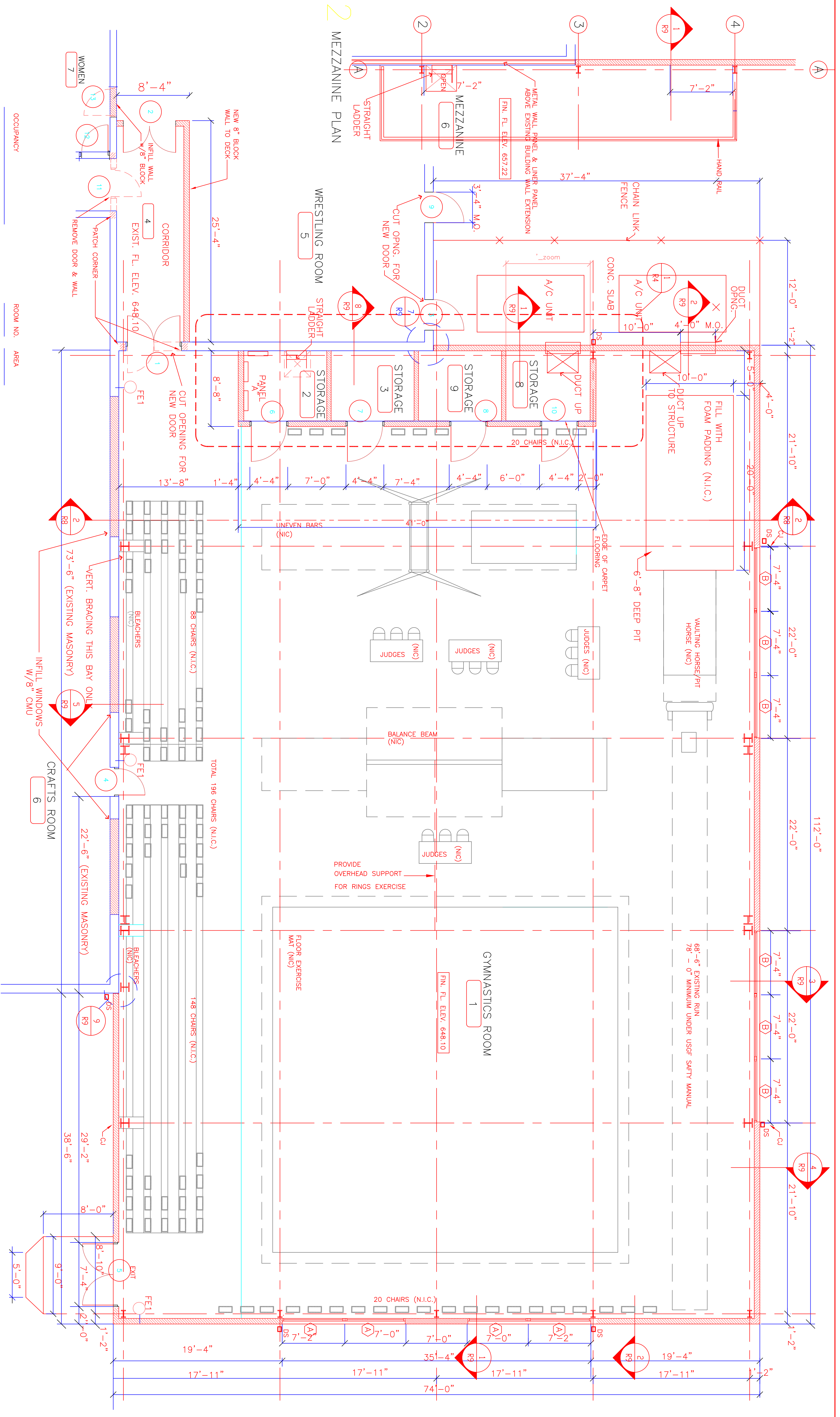
REED PARK

4233 S. YUKON AVE.
TULSA, OKLAHOMA

SHEET TITLE:
GYMNASTICS PLAN

DATE: 7/3/95

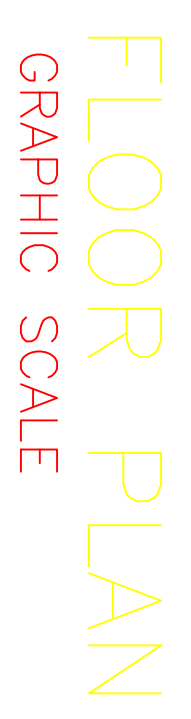
SHEET NUMBER: **R4** OF 18



OCCUPANCY	ROOM NO.	AREA
CHAIRS	236	GYMNASTICS ROOM
PARTICIPANTS	30	1
COACHES/JUDGES		7,764 S.F.
STANDING	34	
TOTAL ROOM OCCUPANCY	300	

1 GYMNASTICS ROOM FLOOR PLAN

2 MEZZANINE PLAN



RECORD DRAWINGS